

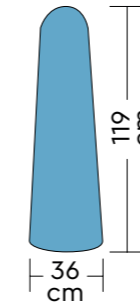


MARTE PNEUMATICA

MARTE PNEUMATIC

PRESSA DA STIRO A
FUNZIONAMENTO
PNEUMATICO DA
ALLACCIARE A FONTE DI
VAPORE

PNEUMATIC IRONING
PRESS TO BE CONNECTED
A THE STEAM SOURCE



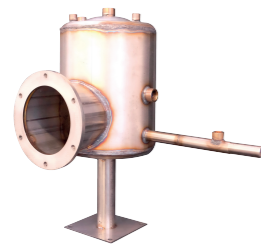
UNIVERSALE LAVANDERIA
UNIVERSAL LAUNDRY



240

241

CALDAIA BOILER



PACKAGING



ACCESSORI APPLICABILI A RICHIESTA

ACCESSORIES AVAILABLE BY REQUEST

Aspiratore 0,5 HP
Vacuum motor 0,5 HP

Braccio inox
Stainless steel arm

Caldia interna 10 l. (12 kW) 400 V+N - 50 Hz /
(230V - 50 Hz - 3-fase)
*Built-in 10 L boiler (12 kW) 400 V+N 50 Hz /
(230V - 50 Hz - 3 phase)*

Chiusura piano superiore a pedale + telaio salvamani
Head closing by pedal + safety frame

Compressore da 1,5 HP
1,5 HP compressor

Ferro da stiro con gruppo vapore
Iron with condensate separator

Kit pistola aria/vapore
Steam/air pistol kit

Kit soffiaggio
Blowing kit

Lato superiore lucido
Polished top head

Caratteristiche tecniche

Technical features

MARTE PNEUMATICA

Ingombro - Overall dimensions	120×140×160 H cm
Imballo - Packing	2,8 m ³
Peso - Weight	200-300 kg (in base agli accessori according to accessories)
Consumo medio vapore - Average steam consumption	15÷20 Kg/h
Pressione aria compressa - Compressed air pressure	6 BAR (richiesta - required)
Pressione di esercizio vapore - Operating steam pressure	5÷6 BAR (richiesta - required)
Diametro attacco aspiratore - Vacuum outlet diameter	100 mm
Voltaggio standard - Standard voltage	230 V - 50 Hz
Voltaggio a richiesta - Upon request	400 V+N - 50 Hz (solo con caldaia only with steam boiler)

